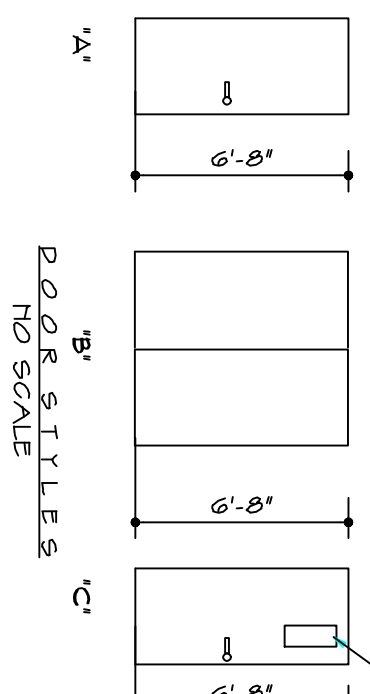


ROOM NAME	FLOORS	BASES	WALLS	Ceilings	HEIGHT	NOTES
WAREHOUSE 4B		SEALED CONCRETE CARPET				
OFFICE 4 & 3		4" VINYL	1" GYP.B.D (PTD)		7'-0"	
STORAGE			SMART PANEL TO 10'-0"		8'-0"	
RECEPTION			STEEL ABOVE 10'-0"		8'-0"	
LUNCH			PREFR. STEEL		8'-0"	
LOBBY					8'-0"	
HALL					8'-0"	
POCK					10'-0"	5" x 5" CER. TILE AT ENT. POCK

NO.	MATERIAL	WIDTH	HEIGHT	STYLE	FRAME	HARDWARE	REMARKS
1	S.C. WOOD	3'-0"	6'-8"	A	WOOD SET 4		
2	S.C. WOOD	3'-0"	6'-8"	A	WOOD SET 2		
3	S.C. WOOD	3'-0"	6'-8"	A	WOOD SET 2		
4	S.C. WOOD	3'-0"	6'-8"	A	WOOD SET 3		
5	S.C. WOOD	3'-0"	6'-8"	A	WOOD SET 1		
6	S.C. WOOD	3'-0"	6'-8"	A	WOOD SET 4		
7	S.C. WOOD	3'-0"	6'-8"	A	WOOD SET 3		
8	S.C. WOOD	3'-0"	6'-8"	A	WOOD SET 4		
9	H.C. WOOD	013'-0"	6'-8"	B	WOOD SET 5		
10	S.C. WOOD	3'-0"	6'-8"	A	WOOD SET 1		
11	S.C. WOOD	3'-0"	6'-8"	A	WOOD SET 1		
12	S.C. WOOD	3'-0"	6'-8"	A	WOOD SET 4		

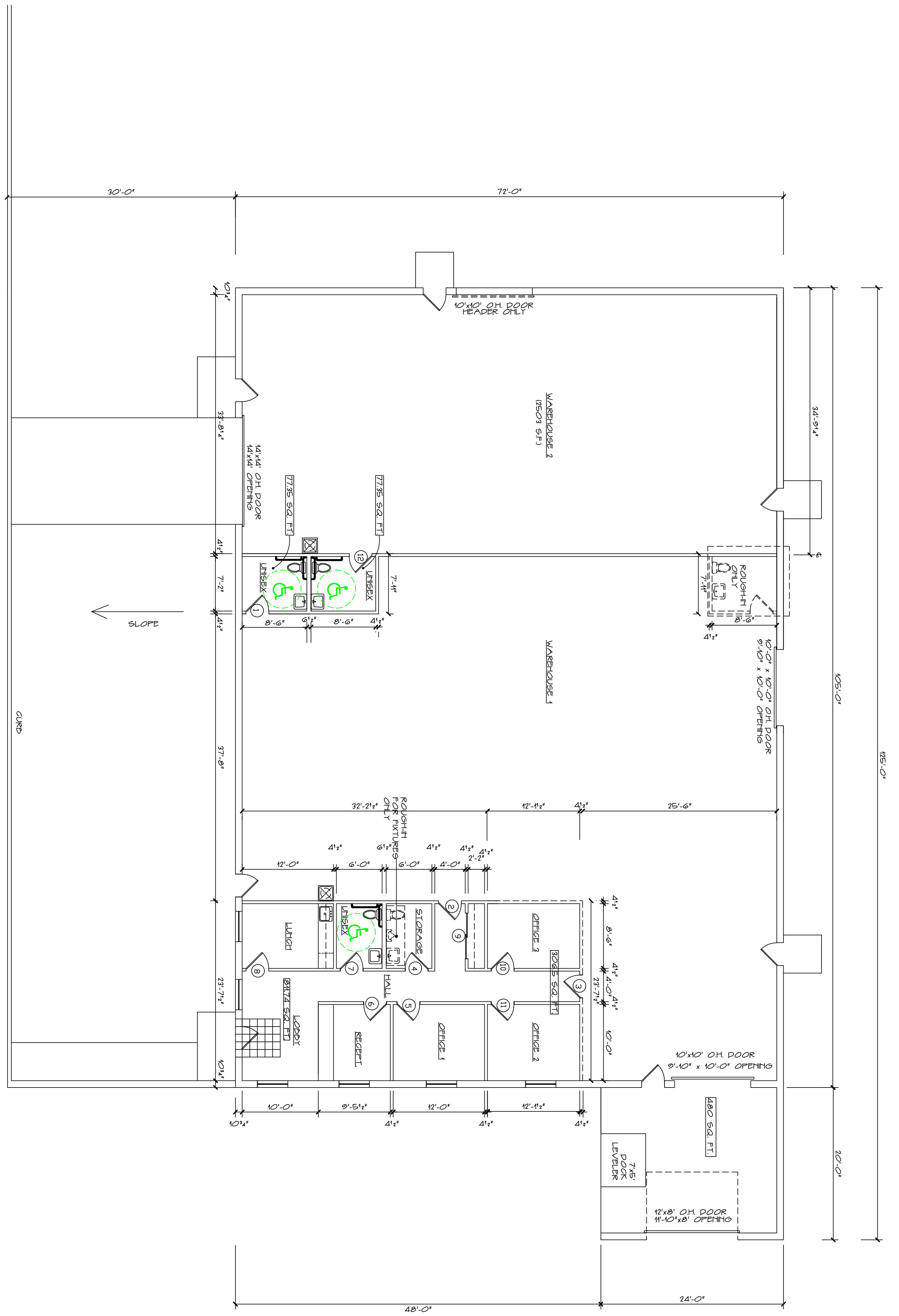
NOTE: ALL EXTERIOR DOORS ARE PROVIDED BY MORTON BUILDINGS. LAMINATED SAFETY GLASS



- HARDWARE SCHEDULE**
- 1/4" PAIR BUTTS, OFFICE LOCK SET WITH LEVER HANDLES, WALL STOP.
 - 1/4" PAIR BUTTS, CLOSER, OFFICE LOCK SET WITH LEVER HANDLES.
 - 1/4" PAIR BUTTS, PASSAGE SET WITH LEVER HANDLES, WALL STOP.
 - 1/4" PAIR BUTTS, PRIVACY LATCH SET WITH LEVER HANDLES, WALL STOP.
 - SLIDING DOOR TRACK, FINGER PULLS.

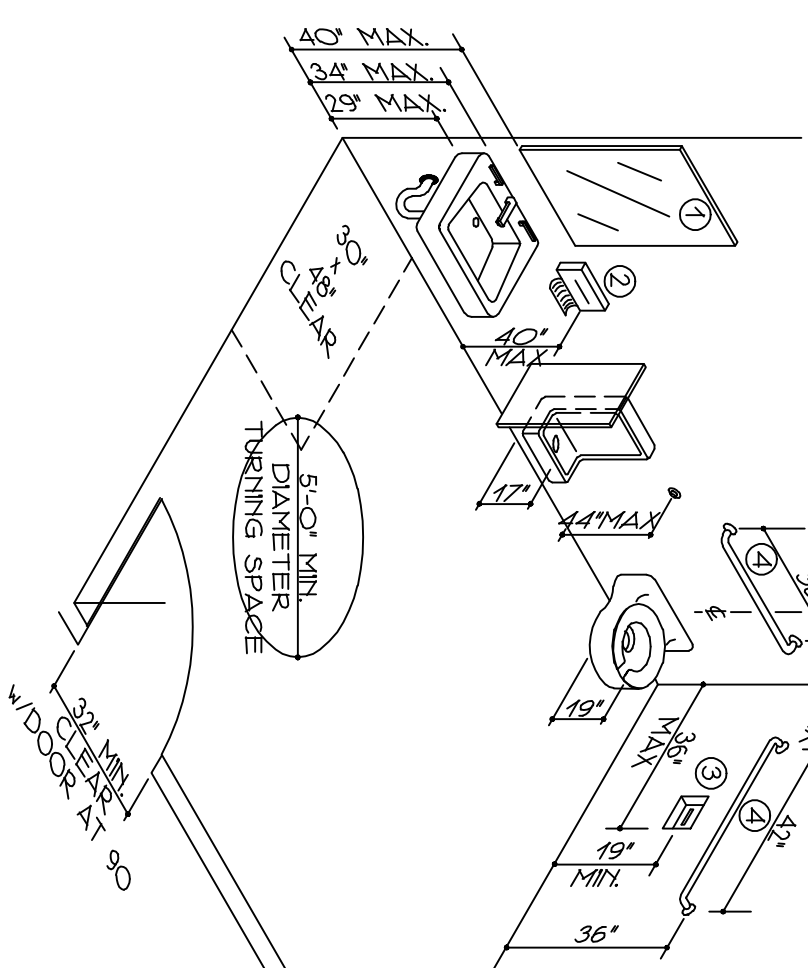
ITEM	QUANTITY	MANUFACTURER
MIRROR (H.C.)		
SOAP DISPENSER	40" MAX	BOBRICK B-793 1630 W/SATIN S.S. FIN.
TOILET TISSUE DISPENSER	40" MAX	BOBRICK B-612 W/SATIN S.S. FIN.
TOILET TISSUE DISPENSER	40" MAX	BOBRICK B-612 W/SATIN S.S. FIN.
GRAB BAR 42"	33" TO 36"	BOBRICK B-663 W/SATIN S.S. FIN.
GRAB BAR 36"	33" TO 36"	BOBRICK B-663 W/SATIN S.S. FIN.

NOTE: SEE ADA REQUIREMENTS THIS SHEET FOR LOCATIONS



FLOOR PLAN
1/8" = 1'-0"

- 1 LAVATOIRES AND MIRRORS SHALL COMPLY WITH ARTICLE 419 WITH THE FIN NO HIGHER THAN 34" ABOVE THE FLOOR AND A MINIMUM OF 79" CLEAR BENEATH THE ABRON REE & TOE CLEARANCE PER FIGURE 31.4. CLEARANCE SHALL BE MAINTAINED THROUGHOUT THE ENTIRE LENGTH OF THE LAVATORY FIXTURES SHALL COMPLY WITH 495 WITH LEVER OPERATED MIRRORS SHALL BE MOUNTED TO THE REFLECTIVE SURFACE IS NO HIGHER THAN 40" ABOVE THE FLOOR.
- 2 PAPER TOWEL DISPENSER
- 3 TOILET TISSUE DISPENSER
- 4 WATER CLOSET SHALL COMPLY WITH ARTICLE 416. GRAB BAR AND RECEPTIVE GRAB BARS 44" - 46" DIA. V/W CLEAR FROM BAR TO WALL.
- 5 DOORS TO ACCESSIBLE TOILET ROOMS SHALL NOT SWING INTO THE REQUIRED CLEAR FLOOR SPACE.
- 6 AN UNOBSTRUCTED TURNING SPACE OF 60" DIAMETER SHALL BE PROVIDED WITH THE ACCESSIBLE TOILET ROOM. THIS SPACE SHALL BE MAINTAINED THROUGHOUT THE ENTIRE LENGTH OF THE TURNING SPACE AND CONTROLS BUT MAY NOT BE REDUCED BY DOOR SWINGS.



ADA CLEARANCES AND MOUNTING HEIGHTS
NO SCALE

NO.	REVISIONS

BROUGHTON BUILDING 8
2347 SR 821
MARIETTA, OHIO

MICHAEL E. JOHNSON, P.E.
208 CHAMBERLAIN DRIVE
MARIETTA, OHIO

LEE & HAUGHT ARCHITECTS, LLC
FRANKLIN D. LEE, AIA - DAVID L. HAUGHT, AIA
1406-1/2 COLGATE DRIVE MARIETTA, OHIO 45750
740-373-8841 FAX: 740-373-0664

PROJECT • 0923
DATE
DRAWN BY: KL